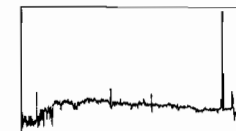
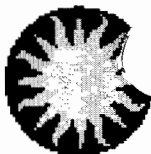
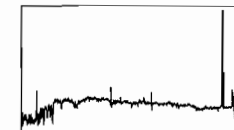
UT Date 2004-02-16 Observers P BerlindColl. Focus 980 Grating/Grism 300

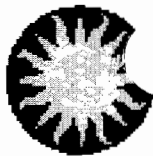
File	Exp Time	UT Start	RA	Dec	Gr.	P.A.	Slit	Program	Bin	Comments
0003.COMP	5	1:11	03:28:41.1	+31:28:55	300	90	3.0	#113 Interacti	4	
0004-0010.BIAS	0	1:14	03:31:25.2	+31:28:55	300	90	3.0	#113 Interacti	4	
0011-0013.BIAS	0	1:14	03:31:46.8	+31:28:56	300	90	3.0	#113 Interacti	4	
0014-0023.FLAT	8	1:17	03:35:14.7	+31:28:56	300	90	3.0	#113 Interacti	4	
0024-0033.BIAS	0	1:20	03:37:28.5	+31:28:57	300	90	3.0	#113 Interacti	2	
0034-0035.FLAT	16	1:21	03:38:41.9	+31:28:57	300	90	3.0	#113 Interacti	2	
0036-0041.FLAT	16	1:24	03:42:18.0	+31:28:58	300	90	3.0	#113 Interacti	2	
0042-0043.FLAT	16	1:25	03:43:31.3	+31:28:59	300	90	3.0	#113 Interacti	2	
0044.HD19445	10	2:01	03:08:25.6	26:19:51	300	90	3.0	#56 Spectropho	2	
0045.HD19445	10	2:01	03:08:25.6	26:19:51	300	90	3.0	#56 Spectropho	2	
0046.HD19445	10	2:02	03:08:25.6	26:19:51	300	90	3.0	#56 Spectropho	2	
0047.HD19445	10	2:02	03:08:25.6	26:19:51	300	90	3.0	#56 Spectropho	2	
0048.HD19445	10	2:02	03:08:25.6	26:19:51	300	90	3.0	#56 Spectropho	2	
0049.COMP	10	2:03	03:08:25.6	26:19:51	300	90	3.0	#56 Spectropho	2	
0050.NGC1700	180	2:07	04:56:58.1	-04:52:23	300	90	3.0	#57 Velocity S	4	
0051.COMP	5	2:10	04:56:58.1	-04:52:23	300	90	3.0	#57 Velocity S	4	
0052.2M043852.4+000820	480	2:12	4:38:52.4	+00:8:20	300	90	3.0	#68 2MASS Reds	4	
0053.COMP	5	2:21	4:38:52.4	+00:8:20	300	90	3.0	#68 2MASS Reds	4	
0054.XS00521B0_006	1800	2:24	01:01:23.7	+31:46:08	300	78	3.0	#129 Bright Ch	2	hmmmmmm
0055.COMP	10	2:55	01:01:23.7	+31:46:08	300	78	3.0	#129 Bright Ch	2	

UT Date 2004-02-16 Observers P BerlindColl. Focus 980 Grating/Grism 300

File	Exp Time	UT Start	RA	Dec	Gr.	P.A.	Slit	Program	Bin	Comments
0056.2M044127.1+243311	1800	2:57	4:41:27.1	+24:33:11	300	90	3.0	#68 2MASS Reds	2	
0057.COMP	10	3:27	4:41:27.1	+24:33:11	300	90	3.0	#68 2MASS Reds	2	
0058.2M044151.3+244250	1800	3:29	4:41:51.3	+24:42:50	300	90	3.0	#68 2MASS Reds	2	
0059.COMP	10	3:59	4:41:51.3	+24:42:50	300	90	3.0	#68 2MASS Reds	2	
0060.sn2003kf	1500	4:02	06:04:35.4	-12:37:42	300	12	3.0	#2 SN Observat	2	
0061.COMP	10	4:27	06:04:35.4	-12:37:42	300	12	3.0	#2 SN Observat	2	
0062.Hiltner600	60	4:29	06:42:37.2	02:11:25	300	1	3.0	#56 Spectropho	2	
0063.Hiltner600	60	4:30	06:42:37.2	02:11:25	300	1	3.0	#56 Spectropho	2	
0064.Hiltner600	60	4:31	06:42:37.2	02:11:25	300	1	3.0	#56 Spectropho	2	
0065.COMP	10	4:33	06:42:37.2	02:11:25	300	1	3.0	#56 Spectropho	2	
0066.2M044841.7+191928	1200	4:37	4:48:41.7	+19:19:28	300	90	3.0	#68 2MASS Reds	4	
0067.COMP	5	4:57	4:48:41.7	+19:19:28	300	90	3.0	#68 2MASS Reds	4	
0068.2M044949.0+725835	600	5:05	4:49:49.0	+72:58:35	300	90	3.0	#68 2MASS Reds	4	
0069.COMP	5	5:16	4:49:49.0	+72:58:35	300	90	3.0	#68 2MASS Reds	4	
0070.2M045107.6+632014	600	5:17	4:51:7.6	+63:20:14	300	90	3.0	#68 2MASS Reds	4	
0071.COMP	5	5:27	4:51:7.6	+63:20:14	300	90	3.0	#68 2MASS Reds	4	
0072.2M050944.2+194800	1200	5:29	5:9:44.2	+19:48:0	300	90	3.0	#68 2MASS Reds	4	
0073.COMP	5	5:49	5:9:44.2	+19:48:0	300	90	3.0	#68 2MASS Reds	4	
0074.2M052703.1+080148	240	5:50	5:27:3.1	+08:1:48	300	90	3.0	#68 2MASS Reds	4	
0075.COMP	5	5:55	5:27:3.1	+08:1:48	300	90	3.0	#68 2MASS Reds	4	

UT Date 2004-02-16 Observers P BerlindColl. Focus 980 Grating/Grism 300

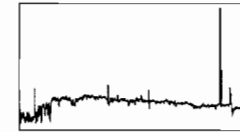
File	Exp Time	UT Start	RA	Dec	Gr.	P.A.	Slit	Program	Bin	Comments
0076.2M052802.9+115922	600	5:56	5:28:2.9	+11:59:22	300	90	3.0	#68 2MASS Reds	4	
0077.COMP	5	6:06	5:28:2.9	+11:59:22	300	90	3.0	#68 2MASS Reds	4	
0078.2M054255.6+505038	720	6:08	5:42:55.6	+50:50:38	300	90	3.0	#68 2MASS Reds	4	
0079.COMP	5	6:20	5:42:55.6	+50:50:38	300	90	3.0	#68 2MASS Reds	4	
0080.2M063629.7+053515	1500	6:22	06:36:29.7	+05:35:15	300	90	3.0	#68 2MASS Reds	4	
0081.COMP	5	6:48	06:36:29.7	+05:35:15	300	90	3.0	#68 2MASS Reds	4	
0082.2M064709.4+105726	660	6:49	06:47:9.4	+10:57:26	300	90	3.0	#68 2MASS Reds	4	
0083.COMP	5	7:00	06:47:9.4	+10:57:26	300	90	3.0	#68 2MASS Reds	4	
0084.2M064803.7+054754	900	7:01	06:48:3.7	+05:47:54	300	90	3.0	#68 2MASS Reds	4	
0085.COMP	5	7:16	06:48:3.7	+05:47:54	300	90	3.0	#68 2MASS Reds	4	
0086.2M064847.6+104210	720	7:18	06:48:47.6	+10:42:10	300	70	3.0	#68 2MASS Reds	4	
0087.COMP	5	7:30	06:48:47.6	+10:42:10	300	70	3.0	#68 2MASS Reds	4	
0088.XS02227B2_015	1500	7:32	09:10:47.6	+54:15:08	300	90	3.0	#129 Bright Ch	2	
0089.COMP	10	7:58	09:10:47.6	+54:15:08	300	90	3.0	#129 Bright Ch	2	
0090.sn2004L	1200	8:00	10:27:04.1	+16:01:07	300	0	3.0	#2 SN Observat	2	
0091.COMP	10	8:21	10:27:04.1	+16:01:07	300	0	3.0	#2 SN Observat	2	
0092.XS02227B3_040	360	8:23	09:11:04.2	+54:22:08	300	90	3.0	#129 Bright Ch	2	
0093.COMP	10	8:29	09:11:04.2	+54:22:08	300	90	3.0	#129 Bright Ch	2	
0094.c11039p3947	1200	8:31	10:39:30.5	+39:47:19	300	90	3.0	#150 Distant C	2	
0095.COMP	10	8:51	10:39:30.5	+39:47:19	300	90	3.0	#150 Distant C	2	

UT Date 2004-02-16 Observers P BerlindColl. Focus 980 Grating/Grism 300

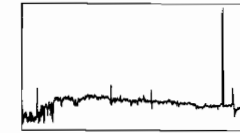
File	Exp Time	UT Start	RA	Dec	Gr.	P.A.	Slit	Program	Bin	Comments
0096.cairnsk3_032	720	8:55	13:12:49.1	22:51:51	300	90	3.0	#64f Cluster I	4	
0097.COMP	5	9:07	13:12:49.1	22:51:51	300	90	3.0	#64f Cluster I	4	
0098.cairnsk3_033	540	9:09	13:14:19.4	27:47:37	300	90	3.0	#64f Cluster I	4	
0099.COMP	5	9:18	13:14:19.4	27:47:37	300	90	3.0	#64f Cluster I	4	
0100.cairnsk3_034	540	9:19	13:24:20.8	31:1:4	300	90	3.0	#64f Cluster I	4	
0101.COMP	5	9:28	13:24:20.8	31:1:4	300	90	3.0	#64f Cluster I	4	
0102.cairnsk3_035	900	9:29	13:4:31.5	30:34:17	300	90	3.0	#64f Cluster I	4	
0103.COMP	5	9:44	13:4:31.5	30:34:17	300	90	3.0	#64f Cluster I	4	
0104.cairnsk3_036	540	9:45	13:5:30.7	21:54:36	300	90	3.0	#64f Cluster I	4	
0105.COMP	5	9:54	13:5:30.7	21:54:36	300	90	3.0	#64f Cluster I	4	
0106.cairnsk3_037	420	9:55	12:53:25.7	33:47:36	300	90	3.0	#64f Cluster I	4	
0107.COMP	5	10:02	12:53:25.7	33:47:36	300	90	3.0	#64f Cluster I	4	
0108.cairnsk3_039	420	10:03	12:38:34	27:50:59	300	90	3.0	#64f Cluster I	4	
0109.COMP	5	10:10	12:38:34	27:50:59	300	90	3.0	#64f Cluster I	4	
0110.Feige34	120	10:12	10:36:41.2	43:21:50	300	104	3.0	#56 Spectropho	2	
0111.Feige34	120	10:14	10:36:41.2	43:21:50	300	104	3.0	#56 Spectropho	2	
0112.COMP	10	10:16	10:36:41.2	43:21:50	300	104	3.0	#56 Spectropho	2	
0113.N4051	150	10:17	12:03:09.7	+44:31:53	300	90	3.0	#6 AGN Monitor	4	
0114.N4051	150	10:20	12:03:09.7	+44:31:53	300	90	3.0	#6 AGN Monitor	4	
0115.COMP	5	10:23	12:03:09.7	+44:31:53	300	90	3.0	#6 AGN Monitor	4	

UT Date 2004-02-16 Observers P BerlindColl. Focus 980 Grating/Grism 300

File	Exp Time	UT Start	RA	Dec	Gr.	P.A.	Slit	Program	Bin	Comments
0116.N4151	30	10:24	12:10:32.6	+39:24:21	300	90	3.0	#6 AGN Monitor	4	
0117.N4151	30	10:24	12:10:32.6	+39:24:21	300	90	3.0	#6 AGN Monitor	4	
0118.N4151	15	10:25	12:10:32.6	+39:24:21	300	90	3.0	#6 AGN Monitor	4	
0119.COMP	5	10:26	12:10:32.6	+39:24:21	300	90	3.0	#6 AGN Monitor	4	
0120.M87	150	10:27	12:30:49.4	12:23:28	300	90	3.0	#6 AGN Monitor	4	
0121.M87	150	10:29	12:30:49.4	12:23:28	300	90	3.0	#6 AGN Monitor	4	
0122.COMP	5	10:33	12:30:49.4	12:23:28	300	90	3.0	#6 AGN Monitor	4	
0123.cairnsk3_038	720	10:34	13:11:10.2	30:29:2	300	90	3.0	#64f Cluster I	4	
0124.COMP	5	10:46	13:11:10.2	30:29:2	300	90	3.0	#64f Cluster I	4	
0125.cairnsk3_040	720	10:47	13:19:1.6	31:2:50	300	90	3.0	#64f Cluster I	4	
0126.COMP	5	11:00	13:19:1.6	31:2:50	300	90	3.0	#64f Cluster I	4	
0127.cairnsk3_041	600	11:00	13:27:15.6	30:14:10	300	90	3.0	#64f Cluster I	4	
0128.COMP	5	11:10	13:27:15.6	30:14:10	300	90	3.0	#64f Cluster I	4	
0129.cairnsk5_010	720	11:11	12:53:36.6	22:7:50	300	90	3.0	#64 Cluster In	4	
0130.COMP	5	11:24	12:53:36.6	22:7:50	300	90	3.0	#64 Cluster In	4	
0131.cairnsk5_011	600	11:25	12:33:1	27:49:49	300	90	3.0	#64 Cluster In	4	
0132.COMP	5	11:35	12:33:1	27:49:49	300	90	3.0	#64 Cluster In	4	
0133.cairnsk5_012	720	11:36	12:56:1.4	31:3:31	300	90	3.0	#64 Cluster In	4	
0134.COMP	5	11:48	12:56:1.4	31:3:31	300	90	3.0	#64 Cluster In	4	
0135.cairnsk5_013	480	11:49	13:2:44.6	33:53:9	300	90	3.0	#64 Cluster In	4	

UT Date 2004-02-16 Observers P BerlindColl. Focus 980 Grating/Grism 300

File	Exp Time	UT Start	RA	Dec	Gr.	P.A.	Slit	Program	Bir	Comments
0136.COMP	5	11:57	13:2:44.6	33:53:9	300	90	3.0	#64 Cluster In	4	
0137.cairnsk5_014	600	11:58	13:17:56.8	32:9:18	300	90	3.0	#64 Cluster In	4	
0138.COMP	5	12:08	13:17:56.8	32:9:18	300	90	3.0	#64 Cluster In	4	
0139.cairnsk5_015	360	12:09	13:7:43.1	27:30:34	300	90	3.0	#64 Cluster In	4	
0140.COMP	5	12:15	13:7:43.1	27:30:34	300	90	3.0	#64 Cluster In	4	
0141.cairnsk5_016	600	12:16	12:54:40	32:22:3	300	90	3.0	#64 Cluster In	4	
0142.COMP	5	12:26	12:54:40	32:22:3	300	90	3.0	#64 Cluster In	4	
0143.cairnsk5_017	480	12:27	12:36:13.5	26:38:43	300	90	3.0	#64 Cluster In	4	
0144.COMP	5	12:35	12:36:13.5	26:38:43	300	90	3.0	#64 Cluster In	4	
0145.cairnsk5_018	360	12:36	13:9:23.1	32:41:46	300	90	3.0	#64 Cluster In	4	
0146.COMP	5	12:42	13:9:23.1	32:41:46	300	90	3.0	#64 Cluster In	4	
0147.cairnsk5_019	720	12:43	13:12:28.1	28:19:44	300	90	3.0	#64 Cluster In	4	
0148.COMP	5	12:56	13:12:28.1	28:19:44	300	90	3.0	#64 Cluster In	4	
0149.cairnsk5_020	360	12:57	12:38:50.2	25:8:45	300	90	3.0	#64 Cluster In	4	
0150.COMP	5	13:03	12:38:50.2	25:8:45	300	90	3.0	#64 Cluster In	4	
0151.N5548	150	13:04	14:17:59.6	+25:08:12	300	90	3.0	#6 AGN Monitor	4	
0152.N5548	150	13:06	14:17:59.6	+25:08:12	300	90	3.0	#6 AGN Monitor	4	
0153.COMP	5	13:09	14:17:59.6	+25:08:12	300	90	3.0	#6 AGN Monitor	4	
0154-0163.BIAS	0	13:12	14:17:59.6	+25:08:12	300	90	3.0	#113 Interacti	4	
0164-0173.FLAT	8	13:16	14:17:59.6	+25:08:12	300	90	3.0	#113 Interacti	4	

UT Date 2004-02-16 Observers P BerlindColl. Focus 980 Grating/Grism 300

<i>File</i>	<i>Exp Time</i>	<i>UT Start</i>	<i>RA</i>	<i>Dec</i>	<i>Gr.</i>	<i>P.A.</i>	<i>Slit</i>	<i>Program</i>	<i>Bir</i>	<i>Comments</i>
0174-0183.BIAS	0	13:18	14:17:59.6	+25:08:12	300	90	3.0	#113 Interacti	2	
0184-0193.FLAT	16	13:24	14:17:59.6	+25:08:12	300	90	3.0	#113 Interacti	2	
0194-0203.DARK	900	15:42	14:17:59.6	+25:08:12	300	90	3.0	#113 Interacti	4	
0204-0213.DARK	900	18:14	14:17:59.6	+25:08:12	300	90	3.0	#113 Interacti	2	