

813

Spectrograph ECHELLE Intensified Reticon TO CAM  
 Grating 300L Log Sheet RAWRET  
 Telescope 61" Wyeth Date 8/1-2/85 Observer RJD  
 Disk ORO 701

Change.... File ID RA Dec L/R Exposure Comments Halo Binaries

Change....	File	ID	RA	Dec	L/R	Exposure	Comments
		1			↓	90 <sup>s</sup>	
		2	G34-39	01:34:39	24:53:00	1 1/2 <sup>m</sup>	
		3	ThAr		↑	90 <sup>s</sup>	
		4	ThAr		↓	90 <sup>s</sup>	
		5	H8779	01:23:54	-00:39:29	2 <sup>m</sup>	IAU RV standards ↓
		6	ThAr		↑	90 <sup>s</sup>	
		7	ThAr		↓	90 <sup>s</sup>	
		8	H213014	22:25:46	17:00:28	3 <sup>m</sup>	
		9	ThAr		↑	90 <sup>s</sup>	
		10	ThAr		↓	90 <sup>s</sup>	
		11	G171-3	23:30:57	42:34:06	2 <sup>m</sup>	Dawn is upon us
		12	ThAr		↑	90 <sup>s</sup>	
		13	ThAr		↓	90 <sup>s</sup>	
		14	SKY			5 <sup>m</sup>	
		15	ThAr		↑	90 <sup>s</sup>	
		16	Incan Ls			120 <sup>m</sup>	
		17	INCANOS			76 <sup>m</sup>	
AUG 2/3 →		18	TH-AR		↓	90 <sup>s</sup>	5187A 80 μ SLIT
		19	SKY			5 <sup>m</sup> 30 <sup>s</sup>	NO OPS - NOVA PROBLEMS
		20	ThAr		↑	90 <sup>s</sup>	
AUG 3-4		21	TH-AR		↓	90 <sup>s</sup>	5187A 80 μ SLIT
		22	SKY			5 <sup>m</sup> 11 <sup>s</sup>	
		23	TH-AR		↑	90 <sup>s</sup>	
		24	ThAr		↓	90 <sup>s</sup>	IAU Standard Star
		25	H136202	15:16:45	01:57:12	2 <sup>m</sup>	
		26	ThAr		↑	90 <sup>s</sup>	
		27	ThAr		↓	90 <sup>s</sup>	
		28	W11449	13:08:51	31:05:34	2 1/2 <sup>m</sup>	SA 57
		29	ThAr		↑	90 <sup>s</sup>	
		30	W61196	12:59:09	28:54:01	16 <sup>m</sup>	
		31	ThAr		↑	90 <sup>s</sup>	
		32					



813

TO CAM

Spectrograph ECHELLE

Intensified Reticon

Grating 300L

Log Sheet

RAWRET 8

Observer RJD

Telescope 61" Wyeth

Date 8/3-4/85

Disk ORO 702

Change.... File ID RA Dec ↑/↓ Exposure Comments Halo Binaries

1950.0 L/R

Change....	File	ID	RA	Dec	↑/↓	Exposure	Comments
					↓	90 <sup>s</sup>	
						4 <sup>m</sup>	
					↑	90 <sup>s</sup>	
					↓	90 <sup>s</sup>	
						2½ <sup>m</sup>	
					↑	90 <sup>s</sup>	
					↓	90 <sup>s</sup>	
						3 <sup>m</sup>	
					↑	90 <sup>s</sup>	
					↓	90 <sup>s</sup>	
						2½ <sup>m</sup>	
					↑	90 <sup>s</sup>	
					↓	90 <sup>s</sup>	
						3 <sup>m</sup>	
					↑	90 <sup>s</sup>	
					↓	90 <sup>s</sup>	
						15 <sup>m</sup>	
					↑	90 <sup>s</sup>	Stop to give Computer to FAF
					↓	90 <sup>s</sup>	
						2 <sup>m</sup>	
					↑	90 <sup>s</sup>	
					↓	90 <sup>s</sup>	
						2 <sup>m</sup>	
					↑	90 <sup>s</sup>	
					↓	90 <sup>s</sup>	Time out to fix Computer
						6 <sup>m</sup>	
					↑	90 <sup>s</sup>	
					↓	90 <sup>s</sup>	Wait for clouds
						2 <sup>m</sup>	
					↑	90 <sup>s</sup>	



813

Spectrograph ECHELLE Intensified Reticon TO CAM  
 Grating 300L Log Sheet RAWRET 8  
 Telescope 61" Wyeth Date 8/3-4/85 Observer RJD  
 Disk ORO 703

Change.... File ID 1950.0 RA Dec L/R Exposure Comments Halo Binaries

Change....	File	ID	1950.0 RA	Dec	L/R ↑/↓	Exposure	Comments
		1			↓	90 <sup>s</sup>	
	G212-7		20:53:27	42:06:48		3 <sup>m</sup>	Clear west of zenith.
		3			↑	90 <sup>s</sup>	Excellent seeing
		4			↓	90 <sup>s</sup>	
	G212-39		21:27:54	45:40:12		1 1/2 <sup>m</sup>	
		6			↑	90 <sup>s</sup>	
	G232-18		21:28:51	48:38:48		2 1/2 <sup>m</sup>	
		8			↑	90 <sup>s</sup>	
		9			↓	90 <sup>s</sup>	
	G210-33		20:43:33	40:12:30		12 <sup>m</sup> 15 <sup>s</sup>	
		11			↑	90 <sup>s</sup>	
		12			↓	90 <sup>s</sup>	
	G230-14		20:36:24	51:33:24		4 <sup>m</sup> 15 <sup>s</sup>	
		14			↑	90 <sup>s</sup>	
		15			↓	90 <sup>s</sup>	
	H3008		00:30:42	-11:00:00		2 <sup>m</sup>	
		17			↑	90 <sup>s</sup>	
		18			↓	90 <sup>s</sup>	
	G71-3		01:20:17	00:27:12		7 1/2 <sup>m</sup>	
		20			↑	90 <sup>s</sup>	
		21			↓	90 <sup>s</sup>	
	G71-33		01:42:38	03:15:08		5 <sup>m</sup>	
		23			↑	90 <sup>s</sup>	
		24			↓	90 <sup>s</sup>	
	S75179		02:07:30	29:34:29		1 1/2 <sup>m</sup>	
		26			↑	90 <sup>s</sup>	
	G72-60		02:05:38	31:09:24		2 <sup>m</sup>	
		28			↑	90 <sup>s</sup>	
		29			↓	90 <sup>s</sup>	
	G262-32		20:58:10	64:51:00		4 1/2 <sup>m</sup>	
		31			↑	90 <sup>s</sup>	
		32					



814

Spectrograph ECHELLE Intensified Reticon TO CAM  
 Grating 300L Log Sheet RAWRET 8  
 Telescope 61" Wyoth Date 8/3-4/85 Observer RJD  
 Disk ORD 704

Change.... File ID 1950.0 RA Dec L/R Exposure Comments Halo Binaries

Change....	File	ID	1950.0 RA	Dec	L/R ↑/↓	Exposure	Comments
		1			↓	90 <sup>s</sup>	
		2	G37-26	03:05:28	26:09:06	2 <sup>m</sup>	
		3			↑	90 <sup>s</sup>	
		4			↓	90 <sup>s</sup>	
		5	H8779	01:23:54	-00:39:29	2 <sup>m</sup>	IAU RV Std ↓
		6			↑	90 <sup>s</sup>	
		7			↓	90 <sup>s</sup>	
		8	H26162	04:06:15	19:28:43	2 <sup>m</sup>	
		9			↑	90 <sup>s</sup>	
		10			↓	90 <sup>s</sup>	
		11	SKY			9 <sup>m</sup>	
		12			↑	90 <sup>s</sup>	
		13	Incand's			120 <sup>m</sup>	
		14	INCANDS			81 <sup>min</sup>	
AUG 4/5		15	TH-AR		↓	90 <sup>s</sup>	5187 A 80 μ SLIT
		16	SKY			5 MIN	
		17	TH-AR		↑	90 <sup>s</sup>	
		18	TH-AR		↓	90 <sup>s</sup>	5197 A 80 μ SLIT
		19	TX CVN	12:42:18	37:02:15	8 MIN	
		20	TH-AR		↑	90 <sup>s</sup>	
		21	TH-AR		↓	90 <sup>s</sup>	
		22	RS OFI	17:47:31	-6°41:40	15 MIN	
		23	TH-AR		↑	90 <sup>s</sup>	
		24	TH-AR		↓	90 <sup>s</sup>	
		25	V433 HER	18:20:02	23:23:47	15 MIN	
		26	TH-AR		↑	90 <sup>s</sup>	
		27	TH-AR		↓	90 <sup>s</sup>	
		28	CI-C16	19:48:21	35:33:24	13 MIN	
		29	TH-AR		↑	90 <sup>s</sup>	
		30	TH-AR		↓	90 <sup>s</sup>	
		31	AG PEG	21:48:36	12:23:27	5 MIN	
		32	TH-AR		↑	90 <sup>s</sup>	



814

Intensified Reticon

TO CAM

Spectrograph ECHELLE

Log Sheet

RAW RET 8

Grating 300L

Observer RJD

Telescope 61" Wyeth

Date 8/4-5/1985

Disk ORO 705

Change....	File	ID	1950.0 RA	Dec	L/R ↑/↓	Exposure	Comments
------------	------	----	--------------	-----	------------	----------	----------

1/2 6 Binaries

1		Th Ar			↓	90 <sup>s</sup>	
2	G221-52		17:39:27	04:23:24		2 <sup>m</sup>	
3		Th Ar			↑	90 <sup>s</sup>	
4		Th Ar			↓	90 <sup>s</sup>	
5	G200-62		14:53:46	53:52:30		1 1/2 <sup>m</sup>	
6		Th Ar			↑	90 <sup>s</sup>	
7		Th Ar			↓	90 <sup>s</sup>	
8	G223-83		14:47:00	59:07:00		2 <sup>m</sup>	
9		Th Ar			↑↓	90 <sup>s</sup>	
10	G223-69		14:31:16	61:39:24		2 1/2 <sup>m</sup>	
11		Th Ar			↑↓	90 <sup>s</sup>	
12	G223-82		14:46:51	63:08:30		9 1/2 <sup>m</sup>	
13		Th Ar			↑	90 <sup>s</sup>	
14		Th Ar			↓	90 <sup>s</sup>	
15	G179-56		15:47:23	45:56:42		1 1/2 <sup>m</sup>	
16		Th Ar			↑↓	90 <sup>s</sup>	
17	G202-25		15:58:22	45:52:48		4 <sup>m</sup>	
18		Th Ar			↑	90 <sup>s</sup>	
19		Th Ar			↓	90 <sup>s</sup>	
20	G180-58		16:26:45	44:47:36		10 <sup>m</sup>	
21		Th Ar			↑	90 <sup>s</sup>	
22		Th Ar			↓	90 <sup>s</sup>	
23	G142-2		18:59:36	15:59:36		3 <sup>m</sup>	
24		Th Ar			↑	90 <sup>s</sup>	
25		Th Ar			↓	90 <sup>s</sup>	
26	H014042		19:33:12	01:37:12		2 <sup>m</sup>	
27		Th Ar			↑	90 <sup>s</sup>	
28		Th Ar			↓	90 <sup>s</sup>	
29	G92-39		19:53:40	04:10:18		2 <sup>m</sup>	
30		Th Ar			↑↓	90 <sup>s</sup>	
31	G23-14		19:49:22	05:29:12		4 1/2 <sup>m</sup>	
32		Th Ar			↑↓	90 <sup>s</sup>	



814

Intensified Reticon

TO CAM

Spectrograph ECHELLE

Log Sheet

RAWRET 8

Grating 300L

Observer RJD

Telescope 61" Wyeth

Date 8/4-5/85

Disk ORO 706

Change.... File ID 1950.0 RA Dec L/R Exposure Comments Halos Binaries

Change....	File	ID	1950.0 RA	Dec	L/R	Exposure	Comments	
		1	G92-23	19:40:02	08:02:00		2 <sup>m</sup>	
		2	Th Ar			↕	90 <sup>s</sup>	
		3	S105417	19:52:47	10:36:15		2 <sup>m</sup> 45 <sup>s</sup>	
		4	Th Ar			↑	90 <sup>s</sup>	
		5	Th Ar			↓	90 <sup>s</sup>	
		6	G24-3	20:03:15	03:54:24		9 <sup>m</sup>	Interrupted by clouds
		7	Th Ar			↑	90 <sup>s</sup>	
		8	Th Ar			↓	90 <sup>s</sup>	
		9	S125806	20:23:47	09:17:35		2 <sup>m</sup> 45 <sup>s</sup>	
		10	Th Ar			↑	90 <sup>s</sup>	
		11	Th Ar			↓	90 <sup>s</sup>	
		12	G25-7	20:48:38	06:50:36		3 <sup>m</sup>	
		13	Th Ar			↕	90 <sup>s</sup>	
		14	S126276	20:47:57	04:52:30		3 <sup>m</sup>	
		15	Th Ar			↑	90 <sup>s</sup>	
		16	Th Ar			↓	90 <sup>s</sup>	
		17	G27-28	22:24:01	04:21:18		2 <sup>m</sup> 15 <sup>s</sup>	
		18	Th Ar			↑	90 <sup>s</sup>	
		19	Th Ar			↓	90 <sup>s</sup>	
		20	G27-42	22:40:45	-6:37:36		1 <sup>m</sup>	
		21	Th Ar			↑	90 <sup>s</sup>	
		22	Th Ar			↓	90 <sup>s</sup>	Clouds Interfering
		23	G27-44	22:41:18	03:37:12		1 1/2 <sup>m</sup>	
		24	Th Ar			↑	90 <sup>s</sup>	
		25	Th Ar			↓	90 <sup>s</sup>	
		26	G153-65	22:53:12	-8:05:24		1 <sup>m</sup>	
		27	Th Ar			↕	90 <sup>s</sup>	
		28	G157-8	23:01:21	-5:04:00		1 <sup>m</sup> 10 <sup>s</sup>	
		29	Th Ar			↕	90 <sup>s</sup>	
		30	G157-21	23:06:29	-2:49:18		1 1/2 <sup>m</sup>	
		31	Th Ar			↕	90 <sup>s</sup>	
		32	G28-37	23:03:59	-0:28:00		2 <sup>m</sup>	



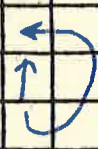
815

Intensified Reticon TO CAM  
 Spectrograph ECHELLE Log Sheet RAWRET 8  
 Grating 300L Observer RJD  
 Telescope 61" Wyeth Date 8/4-5/85 Disk ORO 707

Change.... File ID 1950.0 RA Dec L/R Exposure Comments Halo Binaries

Change....	File	ID	1950.0	RA	Dec	L/R	Exposure	Comments
		1				↑	90 <sup>s</sup>	
		2				↓	90 <sup>s</sup>	
		3		G 28-35	23:03:36	04:25:00	2 <sup>m</sup>	
		4		TH Ar		↑↓	90 <sup>s</sup>	
		5		G 28-43	23:07:00	00:27:18	3 <sup>m</sup>	
		6		TH Ar		↑	90 <sup>s</sup>	Clouds Interfering
		7		Inca ds			120 <sup>m</sup>	Give up - too cloudy
		8		"			120 <sup>m</sup>	
AUG 5/6		9		TH-AR		↓	90 <sup>s</sup>	5187A 80 μSLIT
		10		SKY			5 <sup>MIN</sup>	
		11		TH-AR		↑	90 <sup>s</sup>	
		12		TH Ar		↓	90 <sup>s</sup>	
		13		H136202	15:16:45	01:57:12	2 <sup>m</sup>	IAU R.V. Std.
		14		TH Ar		↑	90 <sup>s</sup>	
		15		TH Ar		↓	90 <sup>s</sup>	
		16		W 61196	12:59:09	28:54:01	20 <sup>m</sup>	SA 57
		17		TH Ar		↑	90 <sup>s</sup>	
		18		TH Ar		↓	90 <sup>s</sup>	
		19		H182890	14:29:53	17:38:12	4 <sup>m</sup>	Halo Binaries ↓
		20		TH Ar		↑	90 <sup>s</sup>	
		21		H135148	15:10:55	12:38:36	2 <sup>m</sup>	
		22		TH Ar		↑	90 <sup>s</sup>	
		23		TH Ar		↑	90 <sup>s</sup>	
		24		TH Ar		↓	90 <sup>s</sup>	
		25		+013070	15:20:08	01:26:30	7 <sup>m</sup>	
		26		TH Ar		↑	90 <sup>s</sup>	
		27		TH Ar		↓	90 <sup>s</sup>	
		28		G 232-40	21:53:43	55:54:06	13 <sup>m</sup>	
		29		TH Ar		↑	90 <sup>s</sup>	
		30		TH Ar		↓	90 <sup>s</sup>	
		31		S102213	16:27:55	11:06:24	2 <sup>m</sup>	
		32		TH Ar		↑	90 <sup>s</sup>	

AUG 5/6





815

TO CAM

Spectrograph ECHELLE Intensified Reticon  
 Log Sheet  
 Grating 300L Observer RJD  
 Telescope 61" Wyeth Date 8/5-6/85 Disk URO 708

Change.... File ID RA Dec 1950.0 L/R Exposure Comments Halo Binaries

Change....	File	ID	RA	Dec	1950.0	L/R	Exposure	Comments
						↑/↓		
		1				↓	90 <sup>s</sup>	
		2	G138-24	16:20:52	17:34:54		2 <sup>m</sup>	
		3				↑↓	90 <sup>s</sup>	
		4	G138-34	16:26:40	18:31:06		1½ <sup>m</sup>	
		5				↑	90 <sup>s</sup>	
		6				↓	90 <sup>s</sup>	
		7	G17-21	16:28:01	04:18:18		2 <sup>m</sup>	
		8				↑	90 <sup>s</sup>	
		9				↓	90 <sup>s</sup>	
		10	G17-21	16:31:13	09:12:42		3 <sup>m</sup>	
		11				↑	90 <sup>s</sup>	
		12				↓	90 <sup>s</sup>	
		13	G138-57	16:39:31	13:14:48		1½ <sup>m</sup>	
		14				↑	90 <sup>s</sup>	
		15				↓	90 <sup>s</sup>	
		16	G139-6	16:59:05	13:53:48		2½ <sup>m</sup>	
		17				↑↓	90 <sup>s</sup>	
		18	G139-11	17:03:59	12:40:18		2 <sup>m</sup>	
		19				↑	90 <sup>s</sup>	
		20				↓	90 <sup>s</sup>	
		21	G169-28	16:48:04	22:24:12		14½ <sup>m</sup>	
		22				↑	90 <sup>s</sup>	
		23				↓	90 <sup>s</sup>	
		24	G169-13	16:27:49	30:48:06		3 <sup>m</sup>	
		25				↑	90 <sup>s</sup>	
		26				↓	90 <sup>s</sup>	
		27	S189153	20:17:01	-20:04:12		3 <sup>m</sup>	
		28				↑↓	90 <sup>s</sup>	
		29	S189226	20:20:39	-21:31:05		3 <sup>m</sup>	
		30				↑	90 <sup>s</sup>	
		31						
		32						



815

Intensified Reticon

TO CAM

Spectrograph ECHELLE

Log Sheet

RAW RET 8

Grating 300L

Observer RJD

Telescope 61" Wyeth

Date 8/5-6/85

Disk ORO 709

Change.... File ID 1950.0 RA Dec L/R Exposure Comments

Change....	File	ID	1950.0 RA	Dec	L/R	Exposure	Comments
					↓	90 <sup>s</sup>	
		5189600	20:39:56	-20:11:36		9 <sup>m</sup>	
					↑	90 <sup>s</sup>	
		-176036	20:34:27	-16:44:30		15 <sup>m</sup>	
					↑	90 <sup>s</sup>	
		-155781	20:42:48	-14:42:00		11 <sup>m</sup>	
					↑	90 <sup>s</sup>	
					↓	90 <sup>s</sup>	
		-145890	20:53:23	-13:42:46		7 <sup>1/2</sup> m	
					↑	90 <sup>s</sup>	
					↓	90 <sup>s</sup>	
		5164618	21:41:42	-12:00:12		2 <sup>m</sup>	
					↑	90 <sup>s</sup>	
					↓	90 <sup>s</sup>	
		G25-5	20:46:49	01:44:24		3 <sup>1/2</sup> m	
					↑	90 <sup>s</sup>	
					↓	90 <sup>s</sup>	
		G156-19	22:30:43	-9:19:12		2 <sup>m</sup>	
					↑	90 <sup>s</sup>	
					↓	90 <sup>s</sup>	
		5191281	22:35:14	-22:54:12		4 <sup>1/2</sup> m	
					↑	90 <sup>s</sup>	
		5191333	22:39:17	-21:02:48		6 <sup>m</sup>	
					↑	90 <sup>s</sup>	
					↓	90 <sup>s</sup>	
		5165532	23:07:48	-13:34:54		7 <sup>1/2</sup> m	
					↑	90 <sup>s</sup>	
					↓	90 <sup>s</sup>	
		G28-41	23:06:45	-2:31:48		2 <sup>m</sup>	
					↑	90 <sup>s</sup>	
					↓	90 <sup>s</sup>	
		G29-20	23:15:28	8:48:12		2 <sup>m</sup> 45 <sup>s</sup>	



815

Intensified Reticon

TO CAM

Spectrograph ECHELLE

Log Sheet

RAW RET 8

Grating 300L

Observer RJD

Telescope 61" Wyeth

Date 8/5-6/85

Disk ORO 710

Change.... File ID 1950.0 RA Dec L/R ↑/↓ Exposure Comments Halo Binaries

Change....	File	ID	1950.0	RA	Dec	L/R	↑/↓	Exposure	Comments
		1					↑	90 <sup>s</sup>	
		2					↓	90 <sup>s</sup>	
		3		G157-93	23:40:59	-8:11:54		3 1/2 <sup>m</sup>	
		4		Th Ar			↑↓	90 <sup>s</sup>	
		5		G31-3	23:45:18	-5:31:18		1 1/2 <sup>m</sup>	
		6		Th Ar			↑	90 <sup>s</sup>	
		7		Th Ar			↓	90 <sup>s</sup>	
		8		G29-65	23:45:18	03:53:54		1 1/2 <sup>m</sup>	
		9		Th Ar			↑↓	90 <sup>s</sup>	
		10		G29-72	23:47:31	2:35:48		1 1/2 <sup>m</sup>	
		11		Th Ar			↑↓	90 <sup>s</sup>	
		12		G31-16	23:52:59	3:13:36		1 1/2 <sup>m</sup>	
		13		Th Ar			↑	90 <sup>s</sup>	
		14		Th Ar			↓	90 <sup>s</sup>	
		15		G158-21	23:58:25	-5:12:36		1 1/2 <sup>m</sup>	
		16		Th Ar			↑↓	90 <sup>s</sup>	
		17		G158-28	00:04:20	-3:54:12		1 1/2 <sup>m</sup>	
		18		Th Ar			↑	90 <sup>s</sup>	
		19		Th Ar			↓	90 <sup>s</sup>	
		20		S166160	00:13:44	-22:51:18		5 <sup>m</sup>	
		21		Th Ar			↑↓	90 <sup>s</sup>	
		22		S147079	00:03:14	-19:58:36		2 <sup>m</sup> 40 <sup>s</sup>	
		23		Th Ar			↑	90 <sup>s</sup>	
		24		Th Ar			↓	90 <sup>s</sup>	
		25		S147079	00:36:37	02:51:18		1 1/2 <sup>m</sup>	
		26		Th Ar			↑	90 <sup>s</sup>	
		27		Th Ar			↓	90 <sup>s</sup>	
		28		G270-71	00:45:25	-9:37:18		1 1/2 <sup>m</sup>	
		29		Th Ar			↑	90 <sup>s</sup>	
		30		Th Ar			↓	90 <sup>s</sup>	
		31		G30-52	00:09:55	14:17:18		2 <sup>m</sup>	
		32		Th Ar			↑	90 <sup>s</sup>	



818

Spectrograph ECHELLE Intensified Reticon TO CAM  
 Log Sheet RAWRET 8  
 Grating 300L Observer RJD  
 Telescope 61" Wyeth Date 8/5-6/85 Disk ORO 711

Change.... File ID 1950.0 RA Dec L/R Exposure Comments Halo Binaries  
 ↑/↓

Change....	File	ID	1950.0 RA	Dec	L/R ↑/↓	Exposure	Comments
		1			↓	90 <sup>s</sup>	
		2	G 34-39	01:34:39	24:53:00		1 <sup>m</sup>
		3	TH-AR		↑	90 <sup>s</sup>	
		4	TH-AR		↓	90 <sup>s</sup>	
		5	G95-57B	03:43:37	41:17:25		2 <sup>m</sup> faint, NE * of pair
		6	TH-AR		↑↓	90 <sup>s</sup>	
		7	G95-57A	03:43:37	41:17:25		2 <sup>m</sup> bright, SW * of pair
		8	TH-AR		↑	90 <sup>s</sup>	
		9	TH-AR		↓	90 <sup>s</sup>	
		10	H26162	04:06:15	19:28:43		2 <sup>m</sup> IAU RV Std
		11	TH-AR		↑	90 <sup>s</sup>	
		12	TH-AR		↓	90 <sup>s</sup>	
		13	H8779	01:23:54	-00:39:29		2 <sup>m</sup> IAU RV Std
		14	TH-AR		↑	90 <sup>s</sup>	
		15	TH-AR		↓	90 <sup>s</sup>	
		16	SKY			7 <sup>m</sup>	
		17	TH-AR		↑	90 <sup>s</sup>	
		18	Incand s			120 <sup>m</sup>	
		19	INCAN s			45 <sup>m</sup>	
AUG 6-7		20	TH-AR		↓	60 <sup>s</sup>	AUG 6-7-1985 5187A 80μSLIT
		21	SKY			3" 30 <sup>s</sup>	RET. PROBLEMS (DARK COUNT 30)
		22	TH-AR		↑	90 <sup>s</sup>	
AUG 7-8		23	TH-AR		↓	90 <sup>s</sup>	5187A 80μSLIT
		24	SKY	OVERCAST		5 <sup>m</sup>	BROKEN WIRE (GD) FOUND IN M.C.P. PWR
		25	TH-AR	<del>OVERCAST</del>	↑	90 <sup>s</sup>	BOX, RETICON DOES NOT SEEM AS
AUG 8-9		26	TH-AR		↓	90 <sup>s</sup>	SENSITIVE. TH-AR POT TURNED UP
		27	SKY			10 <sup>m</sup>	CONSIDERABLY FOR 1300 COUNT
		28	TH-AR		↑	90 <sup>s</sup>	
		29	TH-AR		↓	90 <sup>s</sup>	
		30	H136202	15:16:45	01:57:10		2 <sup>m</sup> IAU RV Std
		31	TH-AR		↑	90 <sup>s</sup>	
		32					







818

TO CAM

Intensified Reticon

Spectrograph ECHELLE

Log Sheet

RAWRET

Grating 300L

Observer

RJD

Telescope 61" Wyeth

Date 8/8-9/85

Disk

ORO 713

Change....	File	ID	1950.0 RA	Dec	L/R ↑/↓	Exposure	Comments
					↓	90 <sup>s</sup>	
	G21-25		18:45:38	-5:08:42		3 1/2 <sup>m</sup>	
	Th Ar				↑	90 <sup>s</sup>	
	Th Ar				↓	90 <sup>s</sup>	
	G227-16		17:49:13	64:24:18		5 <sup>m</sup>	
	Th Ar				↑	90 <sup>s</sup>	
	Th Ar				↓	90 <sup>s</sup>	
	G188-30		21:53:03	32:24:24		7 <sup>m</sup>	
	Th Ar				↑	90 <sup>s</sup>	
	Th Ar				↓	90 <sup>s</sup>	
	G18-12		21:57:42	8:07:54		4 <sup>m</sup>	
	Th Ar				↑	90 <sup>s</sup>	
	G18-27		22:02:58	5:30:42		3 <sup>m</sup>	
	Th Ar				↑	90 <sup>s</sup>	
	Th Ar				↓	90 <sup>s</sup>	
	G27-8		22:00:39	-1:27:48		13 1/2 <sup>m</sup>	
	Th Ar				↑	90 <sup>s</sup>	
	Th Ar				↓	90 <sup>s</sup>	
	S164894		22:07:00	-13:51:00		2 <sup>m</sup>	
	Th Ar				↑	90 <sup>s</sup>	
	Th Ar				↓	90 <sup>s</sup>	
	G27-29		22:25:20	-5:32:06		7 1/2 <sup>m</sup>	
	Th Ar				↑	90 <sup>s</sup>	
	Th Ar				↓	90 <sup>s</sup>	
	G67-7		22:35:53	9:36:00		3 <sup>m</sup>	
	Th Ar				↑	90 <sup>s</sup>	
	G67-9		22:37:06	11:05:30		3 1/2 <sup>m</sup>	
	Th Ar				↑	90 <sup>s</sup>	
	Th Ar				↓	90 <sup>s</sup>	
	S191895		23:23:03	-24:12:48		6 <sup>m</sup>	
	Th Ar				↑	90 <sup>s</sup>	

Italo Binaries



818

Intensified Reticon

TO CAM

Spectrograph ECHELLE

Log Sheet

RAW RET

Grating 300L

Observer RJD

Telescope 61" Wyeth

Date 8/8-9/85

Disk ORO 714

Change....	File	ID	1950.0 RA	Dec	L/R ↑/↓	Exposure	Comments
		1			↓	90 <sup>s</sup>	
		2	G29-50	23:33:16	00:10:18		2 <sup>1</sup> / <sub>2</sub> "
		3	ThAr			↑	90 <sup>s</sup>
		4	ThAr			↓	90 <sup>s</sup>
		5	273-152	23:49:55	-9:41:06		3 <sup>m</sup>
		6	ThAr			↑	90 <sup>s</sup>
		7	ThAr			↓	90 <sup>s</sup>
		8	G129-44	23:53:06	21:32:24		4 <sup>m</sup>
		9	ThAr			↑	90 <sup>s</sup>
		10	ThAr			↓	90 <sup>s</sup>
		11	G260-29	19:38:09	62:30:42		3 <sup>m</sup>
		12	ThAr			↑	90 <sup>s</sup>
		13	ThAr			↓	90 <sup>s</sup>
		14	G262-14	20:27:35	61:50:52		9 <sup>m</sup>
		15	ThAr			↑	90 <sup>s</sup>
		16	ThAr			↓	90 <sup>s</sup>
		17	G262-14	20:58:10	64:51:00		4 <sup>m</sup>
		18	ThAr			↑	90 <sup>s</sup>
		19	ThAr			↓	90 <sup>s</sup>
		20	G262-37	21:13:57	62:37:48		3 <sup>m</sup>
		21	ThAr			↑	90 <sup>s</sup>
		22	ThAr			↓	90 <sup>s</sup>
		23	G231-52	21:37:51	60:03:12		4 <sup>1</sup> / <sub>2</sub> "
		24	ThAr			↑	90 <sup>s</sup>
		25	ThAr			↓	90 <sup>s</sup>
		26	G264-15	21:53:27	61:45:06		2 <sup>1</sup> / <sub>2</sub> "
		27	ThAr			↑	90 <sup>s</sup>
		28	ThAr			↓	90 <sup>s</sup>
		29	G264-15	21:56:03	50:36:24		2 <sup>m</sup>
		30	ThAr			↑	90 <sup>s</sup>
		31	ThAr			↓	90 <sup>s</sup>
		32	H8779	01:23:54	-00:39:29		2 <sup>m</sup>

IAU RV STD



8/8

TO CAM

Intensified Reticon

Spectrograph ECHELLE

Log Sheet

RAW RET 8  
RJD/DWL+JIM

Grating 300L

Observer

Telescope 61" Wyeth

Date 8/8-9/85

Disk ORO 715

Change....	File	ID	1950.0 RA	Dec	L/R ↑/↓	Exposure	Comments
		1			↑	90s	
		2			↓	90s	
		3	H26162	4:06:15	19:28:43		2m IAU R.V. STD
		4			↑	90s	
		5			↓	90s	
		6				5m	
		7			↑	90s	
		8				120min	
		9				60min	
AUG 9-10 →		10			↓	90s	5187A 80 μSLIT
		11				5min	PNY CLOUD
		12			↑	90s	
		13			↓	90s	Morsey & Doc
		14	G66-15	14:34:58	11:14:30		4m 9.6 brighter / southern
		15			↑↓	90s	
		16	G66-16	14:34:58	11:15:06		10m 10.8
		17			↑	90s	
		18			↓	90s	
		19	S140306	15:02:10.	-08:37:18		4m 9.5 telescope is bracing EW Probably wrong star: offsets may have used offsets from previous star
		20			↑	90s	
		21			↓	90s	
		22	G151-59	15:23:19.	-01:53:48		6m 10.4 added a counterweight
		23			↑	90s	
		24			↓	90s	
		25	H136202	15:16:45.4	01:57:12		2m IAU RV STD
		26			↑	90s	
		27			↓	90s	
		28	G16-15	15:51:32	-04:08:00		11m 11.5
		29			↑	90s	
		30			↓	90s	
		31	G153-21	16:00:20.	-06:19:00		5m 10.2
		32			↑	90s	



819

TO CAM

Intensified Reticon

Spectrograph ECHELLE

Log Sheet

RAW RET 8

Grating 300L

Observer D. Latham & J. Morse

Telescope Wyeth

Date 9-10 Aug 1985

Disk ORO 716

Change....	File	ID	1950.0 RA	Dec	L/R ↑/↓	Exposure	Comments
		1			↓	90s	
		2	-25 13871	19:12:50	-25:36:06		15m 11.3 Halo
		3			↑	90s	* * *
		4	-25 13871	"	"	15m	
		5			↑	90s	
		6			↓	90s	
		7	G23-20	19:58:10	09:13:06		20m 11.6
		8			↑	90s	
		9			↓	90s	
		10	H 180617	19:13:31.0	05:07:40		6m 9.1 Masek low-mass binaries
		11			↑	90s	
		12			↓	90s	
		13	G144-9	20:30:28.0	19:21:30		10m 11.7 good ID Halo
		14			↑	90	
		15			↓	90s	
		16	G217-4	23:18:00	54:12:48		6m 11.4
		17			↑	90s	
		18			↓	90s	
		19	G217-8	23:24:15	60:4:06		9m 10.5
		20			↑	90s	
		21			↓	90s	
		22	G217-11	23:28:58	58:53:18		1m 8.6
		23			↑	90s	
		24			↓	90s	
		25	G217-15	23:37:56.0	58:59:00		3m 10.5
		26			↑	90s	
		27			↓	90s	
		28	G217-24	23:53:39	59:24:12		90s ~8
		29			↑	90s	
		30			↓	90s	
		31	G217-29	00:00:28	56:27:18		2m 9.7
		32			↑	90s	



819

Intensified Reticon

TO CAM

Spectrograph ECHELLE

Log Sheet

RAW RET 8

Grating 300L

Observer D. LaDran & J. More

Telescope WyeDr

Date 9-10 Aug 1985

Disk ORO 717

Change....	File	ID	1950.0 RA	Dec	L/R ↑/↓	Exposure	Comments
		1			↓	90s	
	G217-30		00:01:50	57:47:24		3m	10.4 Halo 19
		3			↑	90s	
		4			↓	90s	
	G217-54		00:28:25	55:18:24		3m	10.6
		6			↑	90s	
		7			↓	90s	
	G243-62		01:05:10	63:15:00		7m	11.5
		9			↑	90s	
		10			↓	90s	
	G244-59		02:12:58	64:43:30		2m	8.3
		12			↑	90s	
		13			↓	90s	
	G246-11		02:44:25	62:41:18		3m	10.7
		15			↑	90s	
		16			↓	90s	
	G219-20		01:42:24	57:35:54		2m	9.5
		18			↑	90s	
		19			↓	90s	
	G173-25		01:47:26	55:40:18		2m	9.0
		21			↑	90s	
		22			↓	90s	
	G172-60		01:31:01.0	52:24:36		2m	9.6
		24			↑	90s	
		25			↓	90s	
	G172-59		01:29:53	52:46:42		90s	8.4
		27			↑	90s	
		28			↓	90s	
	G172-24		00:47:55	51:06:42		2m	9.6
		30			↑	90s	
		31					
		32					



819

TO CAM

Intensified Reticon

Spectrograph ECHELLE

Log Sheet

RAW RET 5

Grating 300L

Observer D. Latham & J. Morse

Telescope Wyeth

Date 9-10 Aug 1985

Disk ORD 718

Change....	File	ID	1950.0 RA	Dec	L/R ↑/↓	Exposure	Comments
		T-A			↓	90s	
	G172-38		01:02:41	49:11:18		4m	11.1 Halo 29
		T-A			↑	90s	
		T-A			↓	90s	
	G190-20		23:19:20	43:49:18		90s	7.4
		T-A			↑	90s	
		T-A			↓	90s	
	H173739		18:42:12.9	59:32:59		4m	8.9 Masch Low-mass binaries
		T-A			↑	90s	
	H173740		18:42:13.9	59:32:59		4m	9.7 actually is south
		T-A			↑	90s	
		T-A			↓	90s	
	G262-14		20:27:35	61:50:54		7m	11.5 Halo
		T-A			↑	90s	
		T-A			↓	90s	
	G262-32		20:58:10	61:51:00		4m	10.7
		T-A			↑	90s	
		T-A			↓	90s	
	G128-11		22:51:04	27:29:30		8m	11.5
		T-A			↑	90s	
		T-A			↓	90s	
	G28-40		23:05:35	8:53:06		5m	11.3 clouds around
		T-A			↑	90s	
		T-A			↓	90s	
	H213014		22:25:45	17:00:28		90s	7.7 IAU RU STD
		T-A			↑	90s	
		T-A			↓	90s	
	H014774		23:46:35.6	2:08:12		3m	8.7 Masch low-mass binaries
		T-A			↑	90s	Through clouds
		T-A			↓	90s	- crash -
	H1326 A		00:15:30.9	+43 44:22		3m	8.1
		T-A			↑	90s	



8110

Spectrograph ECHELLE Intensified Reticon TO CAM  
 Grating 300L Log Sheet RAWRET  
 Telescope Wyeth Date 9-10 Aug 1965 Observer D. Latham & J. Mase  
 Disk ORO 719

Change....	File	ID	1950.0 RA	Dec	L/R ↑/↓	Exposure	Comments
	1	Th Ar			↓	90s	
	2	SKY				5m	
	3	Th Ar			↑	90s	
	4	INCAND				120m	
	5	"				120m	
	6	"				90m	
AUG 10-11 →	7	Th Ar			↓	90s	5187A 80μ SLIT
	8	SKY				8m	
	9	Th Ar			↑	90s	
	10	Th Ar			↓	90s	
	11	H186202	15:16:45	01:57:12		2m	IAU RV STD.
	12	Th Ar			↑	90s	
	13	Th Ar			↓	90s	
	14	H182572	19:22:35	11:50:09		2m	IAU RV STD
	15	Th Ar			↑	90s	
	16	Th Ar			↓	90s	
10??	17	H180617?	19:13:31	5:07:40		4 1/2 m	low Mass Binaries - Maseh
	18	Th Ar			↑	90s	
10??	19	H180617?	19:13:31	5:07:40		3 1/2 m	About 2' SE. of ↑
	20	Th Ar			↑	90s	
	21	Th Ar			↓	90s	
	22	G165-11	13:30:16	36:17:42		1 1/2 m	Halo Binaries
	23	Th Ar			↑	90s	
	24	Th Ar			↓	90s	
	25	G165-49	14:05:26	41:49:12		3m	
	26	Th Ar			↑	90s	
	27	Th Ar			↓	90s	
	28	G165-63	14:18:15	38:11:00		7 1/2 m	
	29	Th Ar			↑	90s	
	30	Th Ar			↓	90s	
	31	G135-42	14:19:51	20:28:48		10m	
	32	Th Ar			↑	90s	



Intensified Reticon

TO CAM 8/12

Spectrograph ECHELLE

Log Sheet

RAW RET 8

Grating 300L

Observer RJD

Telescope 61" Wyeth

Date 8/10-11/85

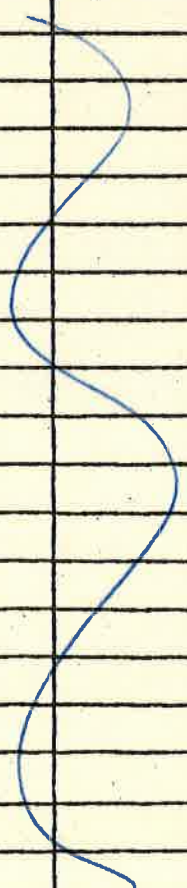
Disk ORO 720

Change....	File	ID	1950.0 RA	Dec	L/R ↑/↓	Exposure	Comments
------------	------	----	--------------	-----	------------	----------	----------

Halo Binaries

1	TH Ar				↓	90 <sup>s</sup>	
2	G241-19	22:42:18	64:18:18			5 <sup>m</sup>	Clouds Interfering
3	TH Ar				↑	90 <sup>s</sup>	
4	TH Ar				↓	90 <sup>s</sup>	
5	G241-58	23:30:34	62:52:42			3 <sup>m</sup>	
6	TH Ar				↑	90 <sup>s</sup>	
7	Incand.					120 <sup>m</sup>	Clouded Out
8	"					"	
9	"					"	
10	"					"	
11	TH AR				↓	90 <sup>s</sup>	5187A 80μ SLIT
12	SKY					5 <sup>m</sup> IN	OVERCAST
13	TH AR				↑	90 <sup>s</sup>	
14							
15							
16							
17							
18							
19							
20							
21							
22							
23							
24							
25							
26							
27							
28							
29							
30							
31							
32							

AUG 11/12





Spectrograph ECHELLE Intensified Reticon TO CAM  
 Grating 300L Log Sheet RAW/RET  
 Telescope SH Date 8/20-21/85 Observer DLW / RPS  
 Disk ORO 721

Change....	File	ID	RA	Dec	1950.0 L/R ↑/↓	Exposure	Comments
5001	1	TH-AR	<del>04 00</del>		↓	90s	120N 6200A
	2	P/G-2	04 01	+50 05		15m	
	3	TH-AR			↑	90s	
5002	4	P/G-2	04 02	+50 04		9m	CLOSED IN OVCST
	5	TH-AR			↑	90s	
	6	INCAN				120m	
AUG 21/22	7	INCAND				120m	
	8	INCANDS				115m	
	9	TH-AR			↓	90s	5187A 80μ SLIT
	10	SKY				5m	OVCCAST - RAIN
	11	TH-AR			↑	90s	
AUG 22/23	12	TH-AR			↓	90s	5187A - clouds
	13	SKY				5m	
	14	TH-AR			↑	90s	Up at 11:30 SST
	15	TH-AR			↓	90s	
	16	H213014	22 25 46	17 00 28		4m	RAU standard
	17	TH-AR			↑	90s	
	18	TH-AR			↓	90s	
	19	5127141	21 51 28	16 37 42		3m	6.2 Halos
	20	TH-AR			↑	90s	
	21	TH-AR			↓	90s	
	22	5127-33	22 25 40	24 41 00		4m	10.0
	23	TH-AR			↑	90s	Increasing clouds
24	TH-AR			↓	90s	Seeing variable 5-7	
25	518-55	22 30 20	00 09 00		3m	9.4	
26	TH-AR			↑	90s		
27	TH-AR			↓	90s		
28	5167-38	22 56 49	11 55 36		3m	6.4	
29	TH-AR			↑	90s		
30	TH-AR			↓	90s		
31	5190-10	23 05 39	11 35 12		8m	12	
32	TH-AR			↑	90s		

Note: 80μ slit for entire bright run - files wrong.



Intensified Reticon TO CAM

Spectrograph ECHELLE Log Sheet RAW RET 8

Grating 300L Observer RPS

Telescope SH Date 8/22-23/85 Disk 722

Change....	File	ID	RA	Dec	1950.0 L/R ↑/↓	Exposure	Comments
		1			↓	90s	
	G 190-15	23 11 16	39 08 54			15m	11.0/50
	Th-Ar				↑	90s	
	Th-Ar				↓	90s	
	G 30-52	φφ 09 55	14 17 18			3m	8.6/20
	Th-Ar				↑	90s	
	Th-Ar				↓	90s	
	S1662φφ	φφ 18 13	+25 44 30			3m	8.3/20
	Th-Ar				↑	90s	
	Th-Ar				↓	90s	
	S166375	φφ 32 21	-22 09 24			6m	9.8/15 Seeing x 8-9
	Th-Ar				↑	90s	
	Th-Ar				↓	90s	
	-2φ17φ	φφ 54 42	-20 06 18			5m	10.3/15
	Th-Ar				↑	90s	
	Th-Ar				↓	90s	
	H 3φφ8	φφ 30 42	-11 φφ φφ			3m	
	Th-Ar				↑	90s	
	Th-Ar				↓	90s	
	-11145	φφ 45 53	-10 57 30			7m	10.8/20
	Th-Ar				↑	90s	
	Th-Ar				↓	90s	
	-18271	φ1 34 54	-17 44 12			5m	
	Th-Ar				↑	90s	
	Th-Ar				↓	90s	
	G 27φ-162	φ1 07 39	-04 50 18			10m	11.7/15
	Th-Ar				↑	90s	
	Th-Ar				↓	90s	Could not find 634-39!
	S75179	φ2 07 30	29 34 29			2m	Sky coming up
	Th-Ar				↑	90s	



Intensified      Reticon      TO CAM

Spectrograph ECHELLE      Log Sheet      RAW/RET 8

Grating 300L      Observer RPS

Telescope SH      Date 8/22-23/85      Disk 723

Change....	File	ID	1950.0 RA	Dec	L/R ↑/↓	Exposure	Comments
		1			↓	90s	
		2	G 73-44	02 17 56	13 26 36	2m	abit late - sky contamination??
		3	Th-Ar		↑	90s	think it is o.k.
		4	Th-Ar		↓	90s	
		5	SKY-DAWN	slow	position	5m	
		6	Th-Ar		↑	90s	
		7	INCAND			120 MIN	
		8	INCAND			75 MIN	
8/23-24/85		9	Th-Ar		↓	90s	5187Å Halo
		10	SKY-EVEN	slow	position	5m	
		11	Th-Ar		↑	90s	
		12	Th-Ar		↓	90s	heavy
		13	H182572	19 22 35	11 50 09	2m	clouds IAU standard
		14	Th-Ar		↓	90s	
		15	H182572	19 22 35	11 50 09	2m	IAU standard
		16	Th-Ar		↑	90s	
		17	Th-Ar		↓	90s	
		18	S122652	17 39 27	4 23 24	3m	thick cloud cover - clouded out
		19	Th-Ar		↑	90s	most of the time
		20	Th-Ar		↓	90s	
		21	G210-46	20 58 01	40 03 42	2m	
		22	Th-Ar		↑	90s	clouded out
		23	Th-Ar		↓	90s	clouds lifting ~2 EST
		24	G30-52	00 09 55	14 17 18	2m	
		25	Th-Ar		↑	90s	
		26	Th-Ar		↓	90s	
		27	G34-39	01 34 39	24 55 00	2m	
		28	Th-Ar		↑	90s	
		29	Th-Ar		↓	90s	
		30	G133-45	01 46 31	43 31 24	15m	11.8/20
		31	Th-Ar		↑	90s	
		32					



Intensified Reticon

TO CAM

Spectrograph ECHELLE

Log Sheet

RAW RET 8

Grating 300L

Observer RPS

Telescope SH

Date 8/23-24/85

Disk 724

Change....	File	ID	RA	Dec	1950.0 L/R ↑/↓	Exposure	Comments
		1			↓	90s	
		2	S38φ29	φ2 23 36	44 44 2φ	20m	9.4/100 clouds forming again
		3	Th-Ar		↑↓	90s	
		4	S38φ29			16m	In & out of clouds.
		5	Th-Ar		↑	90s	
		6	Th-Ar		↓	90s	
		7	H8779	φ1 23 54	φφ 39 29	2m	IAU standard - in clouds
		8	Th-Ar		↑	90s	
		9	Th-Ar		↓	90s	
		10	G71-3	φ1 2φ 17	φφ 27 12	8m	
		11	Th-Ar		↑	90s	
		12	Th-Ar		↓	90s	
		13	SKY DAWN	slow	position	5m	
		14	Th-Ar		↑	90s	
		15	INCAN			120m	
		16	"			60m	
8/28-29/85		17	Th-Ar		↓	90s	5187A Halo
		18	?SKY			5m	wrong λ-setting!
		19	Th-Ar		↑	90s	
		20	Th-Ar		↓	90s	Up at 11:30 pm; fast moving clouds,
		21	H213φ14	22 25 46	17 φφ 28	3m	IAU standard bright moon
		22	Th-Ar		↑	90s	
		23	Th-Ar		↓	90s	
		24	G171-58	φφ 22 26	47 46 12	2m	trough to find!
		25	Th-Ar		↑	90s	
		26	Th-Ar		↓	90s	
		27	G69-1	φφ 29 55	27 55 18	2m	
		28	Th-Ar		↑	90s	
		29	Th-Ar		↓	90s	
		30	G30-52	φφ φ9 55	14 17 18	2m	
		31	Th-Ar		↑	90s	
		32					


Note!  
 Recorded Time is  
 ε Daylight Savings Time  
 - should be ε Standard Time  
 - one hour must be  
 subtracted from this  
 night's observations.  
 RPS



Spectrograph ECHELLE  
 Grating 300L  
 Telescope SH

Intensified Reticon  
 Log Sheet  
 Date 8/28-29/85

TO CAM1  
RAW/RET 8  
 Observer RPS  
 Disk 725

Change....	File	ID	1950.0 RA	Dec	L/R ↑/↓	Exposure	Comments	
		1			↓	90s		
		2	G69-45	φφ 33 22 29 43 24		4m		
		3	Th-Ar		↑	90s		
		4	Th-Ar		↓	90s		
		5	G72-60	φ2 φ5 38 31 φ9 24		5m		
		6	Th-Ar		↑	90s		
		7	Th-Ar		↓	90s		
		8	G173-57	φ2 28 49 45 39 12		9m		
		9	Th-Ar		↑	90s		
		10	Th-Ar		↓	90s		
		11	-10548	φ2 44 31 -1φ 2φ 18		9.5m	Seeing terrible - clouds	
		12	Th-Ar		↑	90s	developing	
		13	Th-Ar		↓	90s	clouded out 2:00 EST	
		14	G34-16	φ1 13 55 18 15 3φ		2m	up 2:30	
		15	Th-Ar		↑	90s		
		16	Th-Ar		↓	90s		
		17	H8779	φ1 23 54 -φφ 39 29		2m	IAU standard	
		18	Th-Ar		↑	90s		
		19	Th-Ar		↓	90s		
		20	H21581	φ3 26 21 -φφ 35 18		2.5m		
		21	Th-Ar		↑	90s		
		22	Th-Ar		↓	90s		
		23	G95-57N	φ3 43 37 41 17 25		2.5m	} which of these is G95-57B ?	
		24	Th-Ar		↓	90s		
		25	G95-57S			2.5m		
		26	Th-Ar		↑	90s		
		27	Th-Ar		↓	90s	clouded out <del>3:40</del> 3:40 EST	
		28	SKY-DAWN	slow position		6m		
		29	Th-Ar		↑	90s		
		30	INCAMP			120 <sup>MIN</sup>		
		31						
		32						

SEE NOTE  
ON DISK 724



Intensified      Reticon      TO CAM1

Spectrograph ECHELLE      Log      Sheet      RAW/RET 8

Grating 300L      Observer RPS

Telescope SH      Date 8/29-30/85      Disk 726

Change....	File	ID	RA	1950.0 Dec	L/R ↑/↓	Exposure	Comments	
		1	Th-Ar	stow	position	↓	90s	5187A halo
		2	SKY-EVEN				5m	clouds - heavy
		3	Th-Ar			↑	90s	
		4	Th-Ar			↓	90s	
		5	H182572	19 22 35	11 50 09		2m	IAU standard
		6	Th-Ar			↑	90s	
		7	Th-Ar			↓	90s	
		8	G182-7	17 23 01	38 04 54		10m	In clouds - could not confirm field
		9	Th-Ar			↑	90s	came up in slit. Stops go! DLSP?
		10	INCLAND				120 min	rain 8:30 EST
		11	INCLAND				5 min	LATE START ON INCLANDS LONG IN AREA
9/1-2/85		12	Th-Ar			↓	90s	5187A partly cloudy
		13	SKY-EVEN	stow	position		5min	
		14	Th-Ar			↑	90s	
		15	Th-Ar			↓	90s	
		16	H182572	19 22 35	+11 50 10		2mm	IAU Velocity Standard
		17	Th-Ar			↑	90s	
		18	Th-Ar			↓	90s	
		19	11-926	18 48 26	-06 20 02		20 min	M-11 / Mathieu
		20	Th-Ar			↓	90s	
		21	11-1223	18 48 19	-06 18 30		19 min	thin clds moving in
		22	Th-Ar			↓	90s	seeing x 5-7
		23	11-916	18 48 26	-06 20 48		20 min	M11 - standard
		24	Th-Ar			↑	90s	
		25	Th-Ar			↓	90s	C-up.
		26	G125-64	20 07 20	+42 42 48		21 min	Halos
		27	Th-Ar			↑	90s	
		28	Th-Ar			↓	90s	
		29	G209-35	20 31 05	41 43 24		2m	
		30	Th-Ar			↑	90s	
		31	/					
		32	/					